

DOMINO 4 PROIETTORE HI

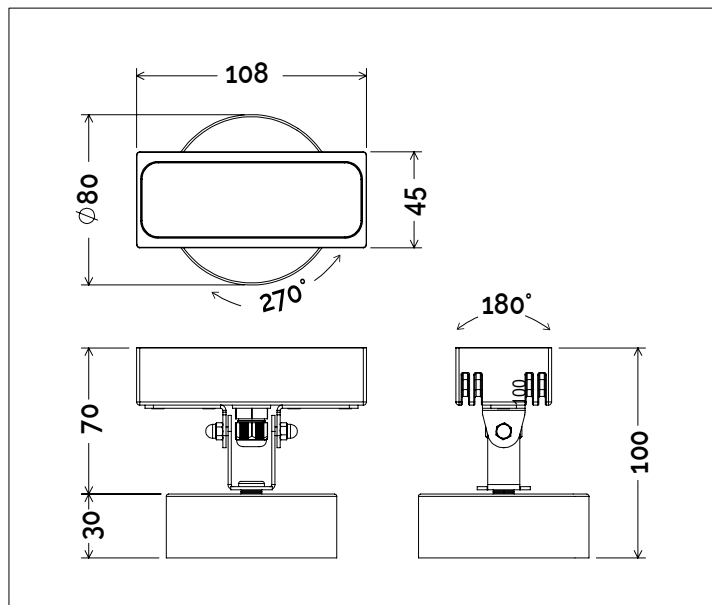
315PB01H11



Descrizione del prodotto / Product description

Proiettore LED direzionabile per esterni.
Ideale per l'illuminazione d'accento.
Corpo in alluminio Anodizzato nero lavorato a CNC.
Staffa di orientamento e fissaggio in Acciaio Inox Aisi 316.
Quadrupla ottica in PMMA trasparente.
Circuito 4x Power LED ad altissima efficienza.
Fornito con sistema di connessione rapida IP68 (vedi istruzioni di montaggio).

Adjustable LED projector for outdoor.
Ideal for accent light.
Body made of CNC black anodized aluminum.
Fixing Adjustable bracket made of Stainless steel AISI 316.
Quadruple optic made of clear PMMA.
4x Power LED circuit source with hig efficiency.
Supplied with IP68 connector (see assembly instructions)



Dati tecnici | Technical Info

* su richiesta / on requests

Finiture Finishes	● 4002 Verniciato Nero Black Painted
Potenza Power	4,2 ~ 8,4W
Corrente Current	-
Tensione Voltage	220 ~ 240Vac
Tolleranza cromatica Chromatic tolerance	3 SDCM
Flusso luminoso Luminous Flux	504 ~ 944lm
Mantenimento del flusso luminoso Flux Maintenance	≥50.000h
Temperature di esercizio Operating temperature	-20° ~ 45°

Simbologia tecnica Technical informations

CE	Conforme alle direttive CE
RoHS	Conforme alle normative RoHS
III	Classe III
IP65	Indice di Protezione IP65
Connettore stagno	in dotazione

Temperatura di Colore Color Temperature

9027 - 2700K CRI 92
9030 - 3000K CRI 92
9040 - 4000K CRI 92

Ottiche Optics

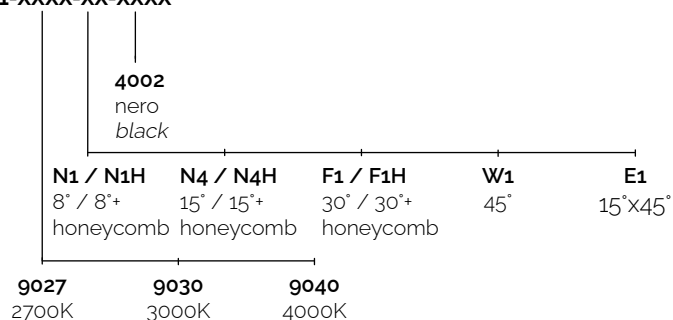
N1 - 8° (Very Narrow Beam)
N4 - 15° (Narrow Beam)
F1 - 30° (Flood Beam)
W1 - 45° (Wide Flood Beam)
E1 - 15x45° (Elliptical Beam)

Sistemi di Controllo Control System

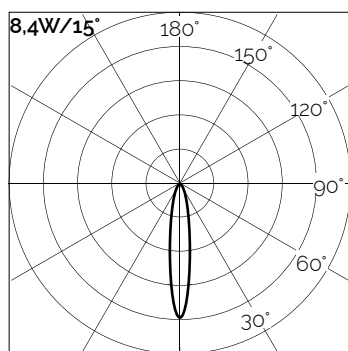
On / Off (a bordo / on board)
PUSH Push * (remoto escluso / remote excluded)
1-10V 1-10V, 0-10V * (remoto escluso / remote excluded)
DALI * (remoto escluso / remote excluded)

Creazione Codice | Code construction

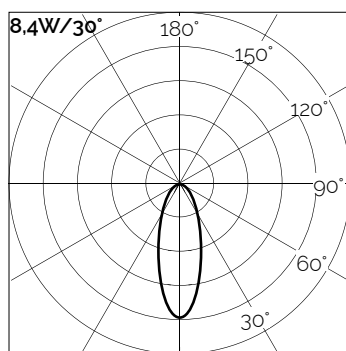
315PB01H11-XXXX-XX-XXXX



Dati Fotometrici | Photometric Specification



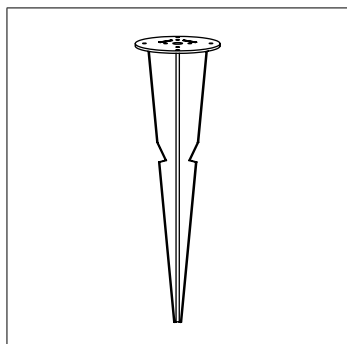
h (m)	E (lx)	D (cm)
1	3680	53
1,5	1570	80
2	974	107
2,5	630	133
3	440	160



h (m)	E (lx)	D (cm)
1	1174	54
1,5	514	80
2	298	107
2,5	198	134
3	146	160

Accessori | Accessories

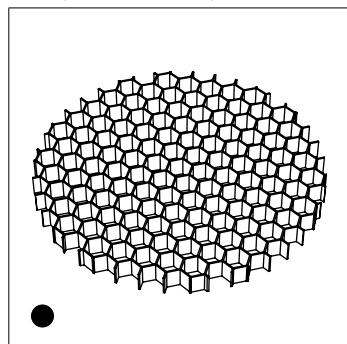
gC001



Picchetto per fissaggio a terra.
(Ø70mm H.250mm)

Spike for ground fixing.
(Ø70mm H.250mm)

Honeycomb / Honeycomb



Filtro Alveolare anti-abbagliamento.
(spessore 3mm)

Anti-glare Honey Comb.
(thickness 3mm)